



Infinity

PvII

4mm/ 6mm /10mm

Permanent

Indoor

SMD LED








Panel

Lighthouse's latest PvII series provides the professional LED display solutions to enhance your public profile and brand image.

Three pixel pitch options—4 mm, 6mm and 10mm—are available, making the PvII series ideal for different indoor applications, such as stadia, arenas, exhibitions, and retail shops.

With true 2,000 nits of brightness, extra wide viewing angles, 16-bit color processing, and Lighthouse's proprietary M4 technology, the PvII series delivers ultra-uniform and subtle image quality.

A slim, flexible casing design enables the PvII series to fulfill special requirements and overcome a wide range of project challenges, from center-hung arena installations to the special design demands of retail venues.

-  Stadiums
-  Indoor Arenas
-  TV studios
-  Conference Centers
-  Transportations
-  Shopping Malls
-  Advertising
-  Branded Shops
-  Corporate Facilities



Infinity

PvII Configurations



LEAP Series

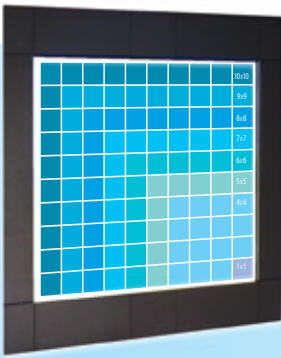
CAT5e

Input source



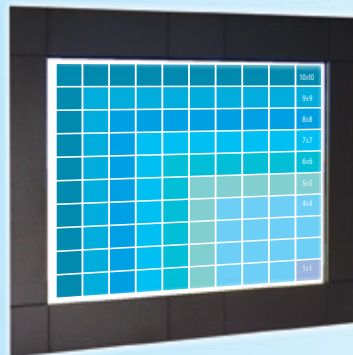
DVI

PvII4 / PvII6



10x10	9.60m (31.50ft.) x 9.60m (31.50ft.)
9x9	8.64m (28.35ft.) x 8.64m (28.35ft.)
8x8	7.68m (25.20ft.) x 7.68m (25.20ft.)
7x7	6.72m (22.05ft.) x 6.72m (22.05ft.)
6x6	5.76m (18.90ft.) x 5.76m (18.90ft.)
5x5	4.80m (15.75ft.) x 4.80m (15.75ft.)
4x4	3.84m (12.60ft.) x 3.84m (12.60ft.)
1x1	0.96m (3.15ft.) x 0.96m (3.15ft.)

PvII10



10x10	19.20m (63.0ft.) x 9.60m (31.50ft.)
9x9	17.28m (56.70ft.) x 8.64m (28.35ft.)
8x8	15.36m (50.40ft.) x 7.68m (25.20ft.)
7x7	13.44m (44.10ft.) x 6.72m (22.05ft.)
6x6	11.52m (37.80ft.) x 5.76m (18.90ft.)
5x5	9.6m (31.50ft.) x 4.80m (15.75ft.)
4x4	7.68m (25.20ft.) x 3.84m (12.60ft.)
1x1	1.92m (6.30ft.) x 0.96m (3.15ft.)

Visual Characteristics

	PvII 4	PvII 6	PvII 10
Brightness	nits		
Visual Viewing Angle - Horizontal	deg.		
Visual Viewing Angle - Vertical	deg.		
Pixel Configuration	R/G/B		
Pixel Pitch	4.0	6.0	10.0
Processing Depth	bit		

Modular Characteristics

	1:1	2:1
Aspect Ratio	960/ 3.15	1,920/ 6.30
Panel Width	960/ 3.15	960/ 3.15
Panel Height	0.92 / 9.9	1.84 / 19.83
Panel Surface Area	sq.m / sq.ft	192 x96
Pixel Resolution	w x h	240 x 240
		160 x 160

Environmental

Ingress Protection (Front / Rear)	IP	IP40 / IP20
Lifetime (50% brightness)	hrs	≥100,000

* Lighthouse reserves the right to change any specifications without notice.

Lighthouse Technologies Ltd.

Headquarters: T+852 2192 1688 F+852 2423 1092 E:info@lighthouse-tech.com www.lighthouse-tech.com

Copyright © 2017 Lighthouse Technologies Ltd. All rights reserved.

LHMKT-17-041